



Bentonville Parks & Recreation

2022 ANNUAL REPORT

Table of Contents

Mission Vision	1
Advisory Board Team	2
Letter from the Director	3
Facilities	4
Trails	5
Parks	6
Bentonville Community Center Upgrades	9-10
Memorial Park Renovations	11-12
Orchards Park Playground Dog Park	13-14
Dedicated Bike Lanes	15
Para Tri Camp	16
Adult Wellness Center	17

Queen's Tree Canopy Initiative Tree Program	18
Christmas Lights	19
The Rink at Lawrence Plaza	20
Public Art	21-22
Maintenance Hours/Highlights	23-24
Adult Sports	25
Youth Sports	26
Camp Bentonville	27
Square 2 Square	28
Run Bentonville Half Marathon	29
Run Bentonville Race Series	30
Recreation Programs	31
Facility Numbers	32
Revenue	33
Economic Impact	34



Our Mission

To enrich lives through Recreation, Leisure and Culture.

Our Vision

Bentonville Parks and Recreation is the choice provider of recreation, leisure and culture. Our parks, trails, programs and events make Bentonville a premier destination for residents and visitors. The parks system and its beauty encourage active lifestyles and enhance quality of life for citizens. We shape the character of Bentonville with parks, greenways and trails that are sustainable, well-maintained and safe. As an innovative organization, Bentonville Parks and Recreation offers comprehensive and diverse recreation programs for people of all ages, abilities and interests.



Advisory Board

Ashton Alsup

Brady Blake

Chris Sooter

Cortney Carlson

Steven George

Craig Gilbert

Dan Grover

Eileen Patrick

Ryan Hollingsworth

Justin Hundley



Our Team

David Wright

Scott Mendenhall

Josh Stacey

Hunter Garrison

Wade Tomlinson

Tracy Acosta

Maria Aleman

Jesse Barrett

Cody Batchelder

Geoffrey Braga

Amanda Brothers

Elijah Burch

Andrew Campbell

Hannah Carter

Jorge Chavez

Petr Chizh

Joe Costiloe

Scott Couture

Chris Cuchia

Baylee D'Amico

Kyle Dixon

Joseph Fleming

Chris Flores

John Francis

Shelby Franklin

Ricky Gaddie

Imelda Giron - Delgado

Alex Hollister

Ethan Howell

Jimmy Hutchison

Tyler Johnson

Chris Kester

Emily Krol

David Lynn

Boe Milton

Michael Mackey II

Teresa Main

Julie Manning

Kendra Musick

Sandra Negrete

Stephanie Nell

Kyle Payne

Nick Pilgrim

Karen Relech

Romario Rivas

Maria Rocha Moreno

Daniela Sanchez

Timothy Sligar

William Snyder II

Myah Summerland

Dana Torczon

Michael Van Horn

Matthew Watlington

Jimmie Weatherford

Creek Wenger

Eric Westermeyer

Hugo Wilkerson

Jon Wilson

Alison Worley

Sandra Younger

Letter from the Director

Hello Friends,

The Bentonville community experienced another year of accelerated growth and increased demand for high-quality recreation activities in 2022. As a result, the Bentonville Parks and Recreation Department was consistently tasked with maintaining the momentum while ensuring that parks, trails, facilities, programs, and events offered a welcoming environment for all.

Regarding some of our 2022 highlights and accomplishments – work was completed on the Orchards Park Dog Park and playground. With natural amenities, crawl sections, and climb challenges, both small and large canine companions have their own dedicated space. The playground is equally as impressive with features for kids of all ages and interests. Along with Bentonville Animal Services, the grand opening was marked by a community-wide celebration and first annual Pups in the Park event. Notable progress was made at Creekside Park and Little Osage Creek Trail including the installation of a lighted cricket field and approval to include eight pickleball courts as construction moves forward. Bike and pedestrian safety remained a top priority as the city's first protected bike lanes were implemented along two key corridors – NW 3rd Street and SW 8th Street.

Without question, our department understands that access to green space as well as relevant and equitable programs and services represent an integral part of the health and well-being of a community. For that reason, we continue to seek input on the proposed needs of residents and visitors alike on both park and facility enhancements - throughout the core phases of planning, design, and implementation.

Growing pains are inevitable as we expand infrastructure and prepare for the decades to follow. We are as grateful as ever for your ongoing community support. The list of capital improvement projects for 2023 is extensive so look for signs of progress through the city.

As both a Bentonville resident and Parks and Recreation Director, focusing on a sense of purpose with nature as the backdrop allows me a unique perspective. I am fortunate to serve in this capacity and watch the city transform into a premier destination while remaining true to the department's mission of enriching lives through recreation, leisure, and culture.

Sincerely,

David Wright, CPRP

Bentonville Parks and Recreation Director



Facilities

Bentonville Community Center

1101 SW Citizens Circle

- 84,000 square foot facility
- Family Leisure Pool, Indoor Water Park
- Competition Pool, Fitness Center, Gymnasium
- Indoor Track, Kids Center, Locker Rooms
- Multi-Purpose Rooms, Arts and Crafts Room



Lawrence Plaza

214 NE A Street

- 7,000 square foot multi use facility
- Splash Park with water jets during summer months
- Ice Skating Rink during the winter months



Downtown Activity Center

215 SW A Street

- 8,400 square foot facility
- Wellness Studio, Conference Room
- Locker Rooms, Lobby Area
- Department Administrative Offices



Melvin Ford Aquatic Center

2000 NE Memorial Park Square

- 75,000 square foot outdoor aquatic facility
- Olympic Size Pool, Wading Pool, Locker Rooms,
- Dive Well, Concessions Area



Trails

Applegate Trail

1 mile trail that connects 3rd St. to 8th St.

Arkansas Missouri Trail

.75 mile trail that parallels the AR/MO Railroad

Bella Vista Lake Trail

1.75 mile hard surface /2.5 mile mountain bike trail

Citizens Park Trail

1 mile paved trail at the Bentonville Community Center

Crystal Bridges Trail

1 mile trail including sculptures and the Sky Space

Downtown Trail

1.5 mile trail downtown connecting to Razorback Greenway

Enfield Park Trail

.21 mile connects Greenway to Enfield Park and to Crystal Bridges

Heritage Trail

3.4 mile trail split trail along Central Ave and SW I Street

John DeShields Trail

1 mile trail that parallels John DeShields Boulevard

Members Place Trail

.36 mile trail connecting Razorback Greenway & Moberly Lane

Memorial Park Fitness Trail

1 mile trail at Memorial Park

Moberly Lane Trail

2 mile trail that connects to Memorial Park Trail

NE J Street Trail

1.23 mile trail connecting to Memorial Park

North Bentonville Trail

2.2 mile trail that is part of the Razorback Greenway

Park Springs Park Trail

2.5 mile trail through wooded areas with a natural spring

Slaughter Pen Mountain Bike Trail System

27 (+) mile mountain bike system – Silver Level Ride Center

South Bentonville Trail

2.5 miles connecting Bentonville trails to Rogers trails

Tiger Trail

1.5 miles of trail connecting N. Bentonville trail to NE J Street Trail

Town Branch Trail

1.1 miles of trail traveling through downtown neighborhoods

Trail of Two Cities

1.5 mile trail connecting SW Bentonville to Razorback Greenway

North Walton Boulevard Trail

2.5 mile trail running length of N. Walton Boulevard

Wishing Spring Trail

1.5 miles of trail connecting Slaughter Pen to Bella Vista



Parks

Austin-Baggett Park

One-acre park with playground, pavilion, and picnic area

Bark Park/Bike Playground

Nine-acre park with dog park, children's bike playground, restroom

Bella Vista Lake

132-acre park with trail, pavilion, fishing lake, and playground

Bogle Park

.63 acre neighborhood park with gazebo and landscape gardens

Citizens Park

35-acre park with multi-purpose fields, trail, pavilion, and amphitheater

Dave Peel Park

Two-acre park with pavilion and playground

Downtown Bentonville Square

One-acre park serving as Bentonville's city center

Durham Place Park

.4-acre neighborhood park with playground

Enfield Park

2.5-acre neighborhood park with pavilion and open turf area

Gilmore Park

One-acre park with playground and picnic tables

Lake Bentonville Park

20-acre park with pavilion, playground, and fishing lake

Memorial Park

73-acre park tennis, basketball, volleyball courts, soccer, baseball & softball

Merchants Baseball Park

Eight-acre baseball complex with concession facility

Old Tiger Track

Six-acre park with track and multi-purpose field

Orchards Park

16.5-acre park with walking trails, tree orchard, pavilion, amphitheater & pond

Park Springs Park

14-acre park with pavilion, soft surface trails, and playground

Phillips Park

40-acre park, baseball complex, multi-purpose fields, concession & playground

Slaughter Pen Mountain Bike Park

27 miles of single track trail with restroom facility

Town Branch Park

One-acre park with gazebo

Train Station Park

.4-acre park with gazebo

Wildwood Park

1.5-acre park with tennis complex, pavilion, and playground



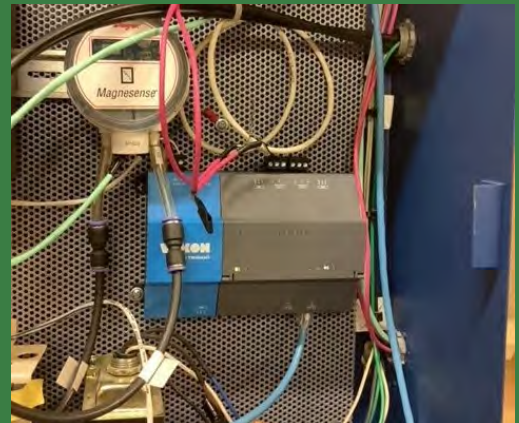




Bentonville Community Center Upgrades

Control Link Upgrade

In 2022 the City of Bentonville upgraded the HVAC controls at the BCC with the help of local contractors. This upgrade allows staff to make changes to the building climate and monitor system performance remotely from any computer. The control link program limits downtime and reduces costs of operating and maintaining the HVAC equipment.

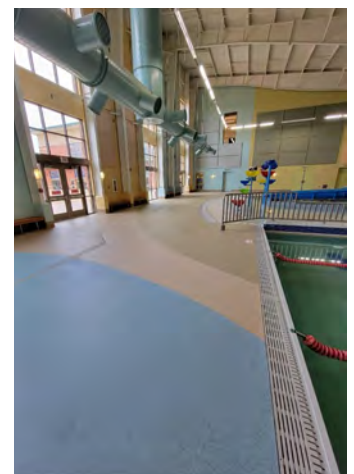
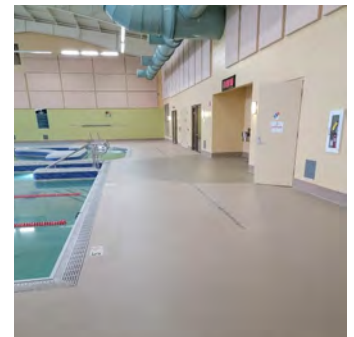


Epoxy Pool Deck Project

The epoxy floor coating on the Bentonville Community Center competition and leisure pool decks was scheduled for replacement due to staining, normal wear from high use and anticipated life span. The project was contracted through the bid process and was awarded to Epoxy Coating Specialists (ECS) which resulted in Service Contract IFB-20-25. The contract was signed on July 29, 2021.

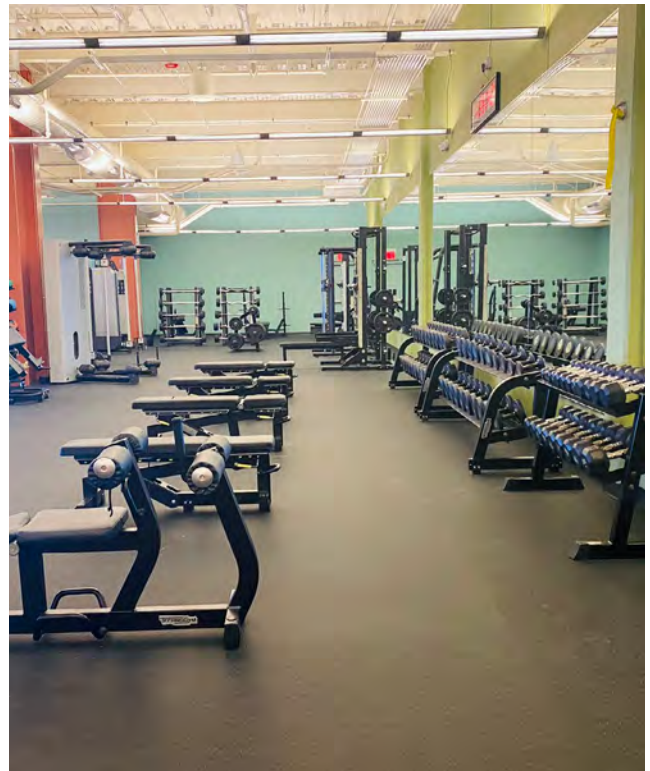
The project consisted of the mechanical removal, collection and disposal of the existing quartz substrate and epoxy layers down to the concrete subfloor, and then adding new layers of the specified colored quartz crystals, epoxy sealer and ultimately, although not specified, a slip resistant grit, to achieve the desired finished surface. The material specifications were determined by Parks and Recreation staff based on the existing epoxy floor specification and related research.

The intended result included mitigating further degradation of the existing pool deck surface, provide an aesthetically pleasing and consistent appearance, and of paramount importance, a safe slip resistant coating that would perform consistently into the future.



Fitness Upgrades

In September and October, the Bentonville Community Center made many updates to our fitness floor. We upgraded all of our existing Technogym recumbent and stationary bikes and elliptical machines to new models. We also added brand new Technogym fitness equipment including Adjustable Pulley Cable Machine, Dual Pectoral/ Reverse Fly Machine, Kneeling Easy Chip Dip Machine, Dual Abductor/ Adductor Machine, 3 Benches, an Olympic Half Rack, and 2 - 10 sets of barbells. Finally we replaced our black free-weight flooring.



Gym Floor Upgrades

In 2022, Bentonville Parks and Recreation requested the original Bentonville Community Center site engineers and architects to inspect the gym floor for damage due to climate, wear, and previous applications of finishes and temporary repairs. Several areas were identified that had sustained damage or failed to remain anchored to the subfloor. Subsequently, a contractor was selected to address the findings, and then proceeded to initiate repairs. Maple flooring pieces were removed and replaced in the identified areas, inspections were carried out and the entire floor was mechanically sanded which leveled the surface and removed old finishes and paint lines.

Two coats of finish were applied, lines were laid out, taped, painted and two topcoats were applied to finish the process. The project was completed during our August shutdown.





Memorial Park Renovations

Basketball Court Fencing

In 2022, Bentonville Parks and Recreation contracted a vendor to perform renovations on the Memorial Park basketball perimeter and court separation fencing. The project consisted of demolishing 325 feet of old fencing, installing new support braces between existing fence posts, painting the braces and posts and installing new heavier gauged coated fence. The project was completed in March and improved the level of safety and the aesthetic at the site.



Soccer Field 9 Upgrade

Memorial Soccer Field #9 has been declining over the years. Compaction and erosion caused low spots and an uneven playing surface. The two-acre site was surveyed, and a desired grade was determined. Contractors then stripped the existing grass and recrowned the site to facilitate positive drainage and alleviate areas that capture and hold runoff. The irrigation system was overhauled, and the field was sprigged with grass that will better withstand the heavy foot traffic. The Parks Maintenance team has been fertilizing, watering, and weeding to get it ready for the public. The field will reopen for the Spring 2023 soccer season.



Tennis Court Resurfacing

Bentonville Parks and Recreation selects a tennis court contractor annually to repair court surface cracking and any surface failures and subsequently paint the surfaces on a rotating basis.

Once repairs are completed, two layers of paint (green and blue) are applied. Game lines are laid out and painted (white) and nets are replaced to complete the project. This project is scheduled during the spring each year.



Memorial Trail Bridge Deck Improvements

In 2022, the City of Bentonville hired a contractor to renovate two older bridges located in the southeast corner of Memorial Park. The work included removal of old deteriorating wood decking from two bridges – removing failed paint from handrails, adding new support framing to the under structures, adding a fresh coat of exterior paint, and installing a two-inch composite wood decking to provide a safe and updated trail way.





Orchards Park Playground | Dog Park

With dedicated sections for small and large dogs, approximately 1.8 acres of newly-developed park space at Orchards Park offers unique land shapes and amenities that reflect the natural character of the region. There are covered shade structures, trees, and fun crawl sections as well as climb challenges for canine companions. The new playground includes features for kids of all ages with swings, a permanent chime and percussion area, benches, and picnic tables.

On the corner of J Street and John DeShields Boulevard, Orchards Park sits directly across from Crystal Bridges Museum. It serves as the official setting for An Evening at Orchards Park, a community-wide Independence Day celebration. This park will continue to be accessible to the public and inclusive in design for all residents and visitors.





Applegate Trail Repair

In April 2021, an overnight storm producing 10+ inches of rain an hour fell in Bentonville – south of the Applegate Trail tunnel. The results of the flash flood caused major trail damage just north of the tunnel. Along with help of FEMA flood money, Bentonville Parks and Recreation hired engineers and a contractor to rebuild and restore the trail in 2022.





Protected Bike Lanes

Bentonville Parks & Recreation helped implement the city's first on-street, protected bike lanes on NW 3rd from Walton Blvd to the Applegate Trail and on SW 8th from SW I St to Sims Drive. Totalling 1.8 miles along two key corridors, these new bike lanes provide safe connections to popular destinations including Downtown Bentonville, Applegate Trail, and Coler Mountain Bike Preserve.

These projects are some of the earliest segments from the Connecting Bentonville Bike & Pedestrian Master Plan and were highlighted by the public as priorities to make biking and other alternative modes safer for everyone.





Para Tri Camp

This year we were excited to work with Ozark Outdoor Foundation to organize Dare2Tri paratriathlon camp. Dare2Tri is organized out of Chicago and works in communities around the United States. Bentonville was able to host 12 Para triathletes for camp June 10th - 12th.

During the athletes time with us they were able to prepare for all three areas of a triathlon; swimming, biking, and running. Offering the chance to size, train with, and transition in at out of new equipment. Finishing camp with a self-determined triathlon distance each of individual athlete they each completed a triathlon.





Adult Wellness Center

In June 2021, the City of Bentonville contracted with Hight Jackson to conduct a feasibility study of the need for a new Adult Wellness Center facility and what this facility would require in terms of size, program, location, and construction and operating costs. Hight Jackson Associates partnered with Barker Rinker Seacat Architecture and Ballard King and Associates to provide a fully developed study. The study process included a statistically valid survey of Bentonville residents, public input via open meetings, programming sessions with staff and a steering committee, development of a site location and proposed floor plan, a project cost estimate, and operational costs for the proposed facility.

We concluded from the study that a wellness facility for 50+ active adults is much needed for the City of Bentonville. The facility should provide both a place for fitness and socialization and be located in an accessible location and ideally with a connection to the City's trail system. The main program spaces are: an activated lobby for socialization and gathering, a warm water therapy pool, a gym for pickleball courts, both a group fitness room and a large, open fitness space, and multipurpose spaces for various activities.

After reviewing several site locations, it was decided that utilizing the existing Downtown Activity Center (DAC) site would be ideal. The DAC is located downtown, rather centrally located to the City, close to the Downtown Trail and Razorback Greenway and adjacent to the future Quilt of Parks, as well as near many amenities that can provide supplementary programming, i.e. the Bentonville Public Library or Brightwater: A Center for the Study of Food. Using the existing Downtown Activity Center site also allows for existing utilities, parking in the adjacent parking garage, and staff resources. The building currently houses Bentonville Parks and Recreation staff offices, a lobby, two classrooms, restrooms and locker rooms, and a conference room. The site has approximately 20,000 of buildable area to the south and east of the existing building and is adjacent to a new public parking garage to the north.

Upon completion of the study, the Bentonville City Council approved the project to become an official City project with funding and design phases planned for the near future.



Queen's Tree Canopy Initiative | Tree Program

A Regal Prince Oak was planted commemorating Queen Elizabeth and the Majesty's Queen's Green Canopy initiative in honor of the Queen's Platinum Jubilee.





Christmas Lights





The Rink at Lawrence Plaza



Public Art

POP!

The interactive installation POP! is a celebration of light, music, and movement. This project was designed for the “Luminothérapie” event, a winter rendez-vous under the patronage of art for the young and old. The event represents a specific niche, promoting public spaces as a vector for the creation and dissemination of exceptional creative installations during Quebec’s iconic winter. We will have the installation for a couple of weeks and would like to share this display as a bit of a love letter for Bentonville and NWA after a long couple of years. The installation moved from the Amazeum to Lawrence Plaza on Tuesday, May 10 and remained until May 24.



Found

The intention of this piece is to create and empower a sense of ownership in the community of Bentonville. Often time we ask ourselves and even others around us, “What makes our community so special?” Many of us jump to the conclusion of materialistic objects and locations but we often over look the fact that without the people, a community is simply just a bunch of empty buildings. People are the driving force that make up a community, the neighbors you are surrounded by or the friends that live accross town. My word, titled *Found*, stands as a beacon of pride, reflecting the faces of people as they pass by and glance over. Capturing a moment of their time to reflect on who they are and where they come from.





Canoe Canoe

Canoe Canoe by Jeff Zischke will be made of re-purposed aluminum canoes that are re-conditioned and re-painted (exact colors are TBD), with a seat and installed to act as a sculptural conversation piece. We would like to install them near the water's edge at Lake Bentonville inviting people to sit, relax and enjoy the environment.



Multi-Cultural Piece

The Building Community art piece was created at Bentonville's first annual Multi-Culture Festival. Patrons drew images and designs on what community means to them on large puzzle pieces. The pieces were then put together to create one large image showing how all of the pieces create the whole community. This art was put on permanent display at Train Station Park in October.



Maintenance Hours & Highlights



The City of Bentonville Parks and Recreation Department's maintenance team is 44 fulltime staff strong, which reflects the addition of nine (9) new positions in 2022, including Parks Maintenance Mechanic, Parks Maintenance Worker II-Trails, Parks Maintenance Worker I-Sanitation, five (5) Parks Maintenance Worker I-Grounds and two (2) Custodian I-Facilities.

The staff is broken down into teams and individuals that focus on sanitation, trails, sports fields, horticulture, turf specialties, forestry, custodial, grounds and facilities.

Four (4) maintenance staff were promoted to Parks Maintenance Worker III's, and two (2) staff promoted to Custodian II.

Additionally, the sports field supervisor retired after 12 years with the City of Bentonville and had the distinction of being one of the founding employees of the parks and recreation department and the sports fields team.



9 new positions

- Park Maintenance Mechanic
- Trails- PMW II
- Sanitation- PMW I
- 5 PMWI
- 2 Custodial I

The team's effort resulted in
16,249 completed work orders and
3 new park additions

Orchards Dog Park
and Playground

Bogle
Park

NW A St
Parking Lot



Besides routine maintenance, highlights included:

 **226**
trees
planted

 **25,000**
tulips
installed

 **700**
yards of mulch
installed in
landscapes

 **Telly
Award**

 **6**
staff promoted
in 2022

 **5,000**
annuals propagated
and installed in
landscapes

New Equipment/ Vehicles:

2 Zero Turn mowers
 2 UTVs
 Tow Behind Debris Blower
 Jacobsen Mower
 Sports Field line painter
 2 Ram 1500
 Ram 3500
 Karcher Floor Scrubber
 Rigid Floor drain Jetter
 and Camera system



Adult Sports

Program	Participants
Adult Kickball.....	330
Adult Sand Volleyball.....	512
Adult Soccer.....	720
Badminton Open Play.....	3,429
Half Marathon Training.....	200
Healthy for Life Program.....	16
Masters Swim Team.....	829
Personal Training.....	4,345
Pickle Ball.....	5,980
Team Run Bentonville.....	420
Wellness Classes.....	34,042



TOTAL PARTICIPANTS
50,823





Youth Sports

Program	Participants
Badminton Lessons	31
Barracudas Swim Team	717
Baseball/Softball Tournaments	14,400
Indoor Volleyball Lessons	170
Ice Skating Lessons	321
Swim Lessons	5,451
Tennis Lessons/Tournaments	3,822
Youth Baseball	1,701
Youth Soccer	4,276
Youth Softball	665
Youth Triathlon	521



TOTAL PARTICIPANTS

32,085





Camp Bentonville

A total of 2,146 campers participated in Camp Bentonville 2022, presented by Stuffed Puffs. From Camp Lego to Camp Mountain Bike to Camp Volleyball to Camp Theatre, Bentonville Parks and Recreation offered something for everyone, hosting 85 different sessions throughout the spring, summer, and fall.





Square 2 Square

The Square 2 Square Bike Rides hosted 3,376 riders across both events, in person and virtually.

The Spring Square 2 Square found a new finish location along Main St, and flowed seamlessly into the Downtown Farmer's Market for a large community celebration.

We hosted a successful Fall Ride—beginning at Lawrence Plaza and reached our maximum capacity (based on planned swag items). We are planning to reach our maximum capacity of 2,000 riders again for each ride in 2023 on May 6 and October 7.





Run Bentonville Race Series

The 2022 Run Bentonville Race Series saw **5,763 runners** participate across **six events**—a 43% increase over 2021 for the same six events! We successfully introduced the Run Bentonville Race Series Race Pass for 2022 with 81 participants.

The Worst Race Ever, Goblin Run, and Freedom Frosty 5K all saw highest registration numbers ever!





Run Bentonville Half Marathon

The 2022 Run Bentonville Half Marathon hosted **2,350 runners** from **27 states** and **5 countries** on April 2, 2022. We look forward to hosting this event again on April 1, 2023.





Recreation Programs

TOTAL PROGRAM PARTICIPANTS

596,332

Program	Participants
---------	--------------

Adult Kickball	330
Adult Sand Volleyball	512
Adult Soccer.....	720
Badminton Lessons.....	31
Badminton Open Play.....	3,429
Barracudas Swim Team.....	717
Baseball/Softball Tournaments.....	14,400
BCC Patrons	367,742
BCC Sports Programs	170
Camp Bentonville	2,146
DAC Patrons	2,617
Enrichment Classes.....	70
Evening at Orchards.....	12,500
Father/Daughter Dance	495
Fitness Assessments	110
Fitness Programs	56
Half Marathon Training.....	200
Healthy for Life Program	16
Ice Skating Lessons	321
Kids Center	19,361
Lawrence Plaza Rink Patrons.....	20,242
Lawrence Splash Park Patrons.....	30,000

Program	Participants
---------	--------------

Lighting of the Square	8,000
Masters Swim Team	829
Melvin Ford Patrons	28,311
Mommy & Me Party.....	198
Personal Training	4,345
Pickle Ball	5,980
Race Series.....	8,273
RB Half Marathon	2,650
Square 2 Square	3,500
Swim Lessons- Group.....	1,619
Swim Lessons- Private	3,832
Swim/Dive Meets	6,701
Team Run Bentonville	420
Tennis Lessons/Programs	3,435
Tennis Tournaments.....	387
Indoor Volleyball	462
Wellness Classes	34,042
Youth Baseball.....	1,701
Youth Soccer	4,276
Youth Softball	665
Youth Triathlon.....	521



Facility Numbers

Bentonville Community Center	367,742 Patrons
Downtown Activity Center	2,617 Patrons
Lawrence Plaza ice Rink	20,242 Patrons
Lawrence Splash Park	30,000 Patrons
Melvin Ford Aquatic Center	28,311 Patrons

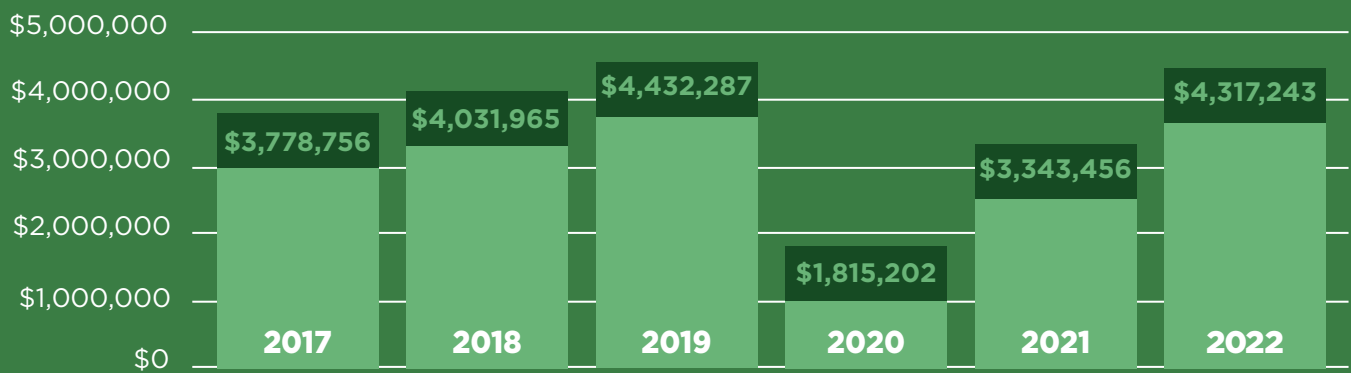
TOTAL PATRONS

448,912



Revenue

Annual Report Revenue Numbers





Economic Impact

	Baseball and Softball Tournaments	\$2,385,000
	Tennis Tournaments	\$58,935
	Race Series	\$851,526
	Square 2 Square	\$342,138
	Swim Meets and Trifest	\$616,293

TOTAL 2022 ECONOMIC IMPACT

\$4,253,892







Downtown Activity Center

215 SW A Street
Bentonville, AR 72712
(479) 464-7275

Bentonville Community Center

1101 SW Citizens Circle
Bentonville, AR 72713
(479) 696-0200

Lawrence Plaza

214 NE A Street
Bentonville, AR 72712
(479) 271-3390

Melvin Ford Aquatic Center

2000 NE Memorial Park Square
Bentonville, AR 72712
(479) 273-9206